



Spec. No.	PS-0708-002
Rev.	A

PRODUCT SPECIFICATION

Model No : CSL-F500DM2HT

Descriptions:
LED Type : BI-COLOR LED
LED Package : Round LED Lamp
Emitting Color : (1)Red / (2)Green
Stopper



CUSTOMER APPROVED SIGNATURES	APPROVED BY	CHECKED BY	PREPARED BY

CHINA SEMICONDUCTOR CORPORATION
Address:2FL. NO.909,Chung-Cheng Road,
Chung-Ho City Taipei Hsien,Taiwan.

OPTO PLUS TECHNOLOGIES CO.,LTD
Address:696 Shun jiang Rd.,Ji Shan St.Shaoxing,
ZheJiang,China

Tel:886-2-2223-9696
Fax:886-2-2223-9377

Tel:86-0575-88623888
Fax:86-0575-88623112



Spec. No.	PS-0708-002
Rev.	A

Model No : CSL-F500DM2HT

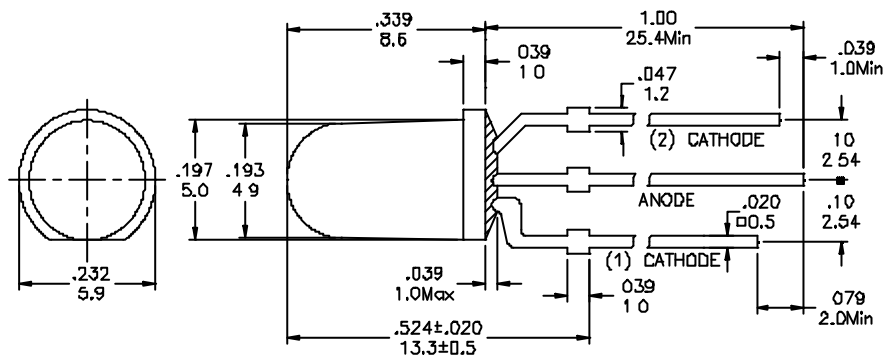
Features -

1. Low Power Consumption.
2. Bi-color LED Lamp
3. High Reliability and Solid
4. Rohs Compliant

Device Selection Guide -

Part No.	Chip		LED Lens
	Material	Emitted Color	
CSL-F500DM2HT	(1)GaAlAs (2)GaP	(1)Red (2)Green	White Diffusion

Package Outline Dimensions -



* Tolerance : $\pm \frac{0.01}{0.25}$

Unit $\frac{\text{inch}}{\text{mm}}$



Model No : CSL-F500DM2HT

Absolute Maximum Rating -

(Ta=25)

Parameter	Symbol	Rating	Unit
Power Dissipation	Pd	84	mW
Forward Current (DC)	IF	30	mA
Peak Forward Current *	IFP	100	mA
Reverse Voltage	VR	5	V
Operating Temp.	Topr	-40 ~ +80	
Storage Temp.	Tstg	-40 ~ +100	
Lead Soldering Temperature	Tsol	Max. 260 for 5 sec Max. (3mm from the epoxy bulb)	

* Pulse width 0.1 msec. duty 1/10

Electro-optical Characteristics -

(Ta=25)

Parameter	Symbol	Min.	Typ.	Max.	Unit	Condition
Forward Voltage	VF (R)	-----	1.8	2.5	V	IF=20mA
	VF (G)	-----	2.2	2.8		
Luminous Intensity	Iv(R)	45	90	-----	mcd	
	Iv(G)	20	45	-----		
Dominant Wavelength	WD(R)	-----	645	-----	nm	
	WD(G)	-----	572	-----		
Reverse Current	IR	-----	-----	100	μ A	VR=5V



Model No : CSL-F500DM2HT

Typical Electrical / Optical Characteristics Curves -

(Ta = 25 Unless Otherwise Noted)

Fig 1. Forward Current vs. Forward Voltage

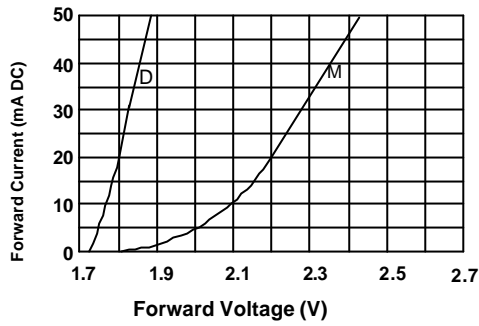


Fig 2. Relative Intensity vs. Forward Current

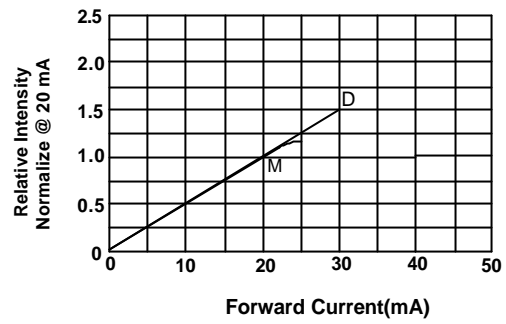


Fig 3. Forward Current vs. Temperature

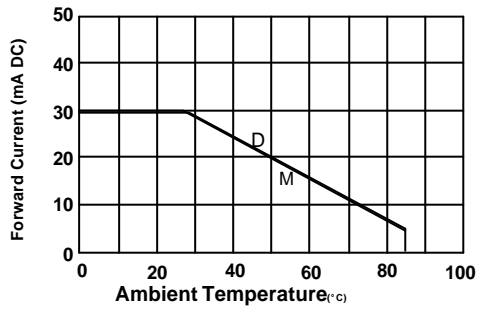


Fig 4. Relative Intensity vs. Temperature

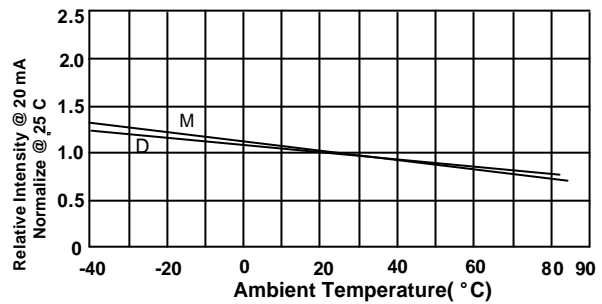
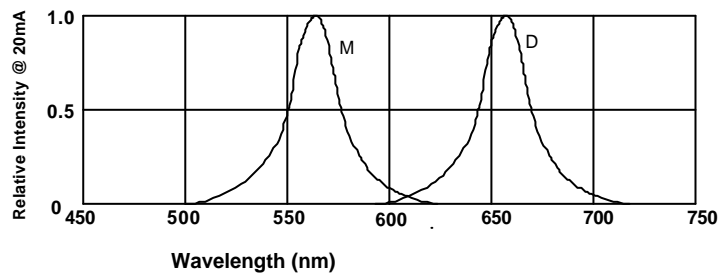


Fig 5. Relative Intensity Vs. Wavelength



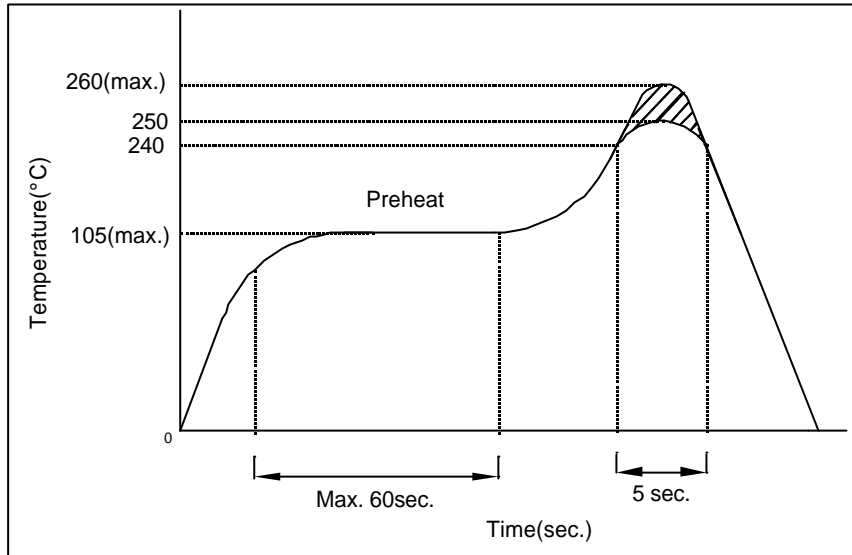


Model No : CSL-F500DM2HT

Precautions For Use -

1. Recommended Soldering conditions

Wave Soldering



2. Soldering Iron

Basic SPEC. is 5sec. When 260 . If temperature is higher, time should be shorter (+10 -1sec.). Power dissipation of iron should be smaller than 15W , and temperature should be controllable. Surface temperature of the device should be under 230 .

3. Static Electricity

a. Static electricity or surge voltage damages LEDs..

It is recommended that a wrist band or an anti-electrostatic glove be used when handling the LEDs.

b. All devices, equipment and machinery must be properly grounded. It is recommended that measures be taken against surge voltage to the equipment that mounts the LEDs.

Revision History

Rev. NO	Date	Change Description
A	2007/8/25	

CSC has the right to update the information without notice, Please confirm with CSC salesman for the latest version.